

US150 Pipe Beveling Machines

Options & Accessories

US150 Crates:

| Order No. | Description |
|---------------|---|
| US150-K01 | Transport crate for US150 pneumatic / hydraulic |
| US150-K02 | Transport crate for US150 pneumatic / hydraulic with US150-Kit24" |
| US150-K03 | Transport crate for US150 pneumatic / hydraulic + cover |
| US150-K04 | Transport crate for US150 pneumatic / hydraulic with US150-Kit24" + cover |
| US150-K05 | Transport crate for US150E |
| US150-K06 | Transport crate for US150E with Kit24" |
| US150-K07 | Transport crate in stainless steel for US150 pneumatic / hydraulic |
| US150-K08 | Transport crate for US150E-BRUSHLESS |
| US150-K09 | Transport box for US150-ASB |
| US150-K10 | Transport crate for copying carriage 30" for US150 |
| US150-K11 | Transport crate for copying carriage 36" for US150 |
| US150PR/C-K01 | Transport box for US150-EMA-NG N°1 |



US150 Elbow Mandrels:

| Order No. | Description |
|----------------|--|
| US150PR/C-1000 | Elbow mandrel assembly EMA for US150 for Ø 10.275" - 20" (261mm - 508mm) |



US150-Kit24":

| Order No. | Description |
|------------|--|
| US150-2702 | Tool-holder for diameter up to 610mm (24.015") |



US150ASB Flange Facing Attachments:

| Order No. | Description |
|---------------|---|
| US150ASB-1223 | Tool-holder OD for flange facing attachment ASB |
| US150ASB-1224 | Tool-holder ID for flange facing attachment ASB |
| US150-3000 | Flange resurfacing module for US150 (Arm Surfacing Belt). Clamping capacity: 150 - 508mm; Surfacing with continuous feed (in connection with the rotation speed). Constant surface finish. 5 different feed rates are available which allows to get various surface finishes. Recommended to be used with a US150 DSB type machine. |



US150 Pipe Beveling Machines

Options & Accessories

US150 Copying Carriage:

| Order No. | Description |
|------------|--|
| US150-3100 | Copying carriage for US150 Stroke 2.952" (75mm) for pipe Ø up to 30" (762mm) |
| US150-3200 | Copying carriage for US150 Stroke 2.952" (75mm) for pipe Ø up to 35.433" (900mm) |



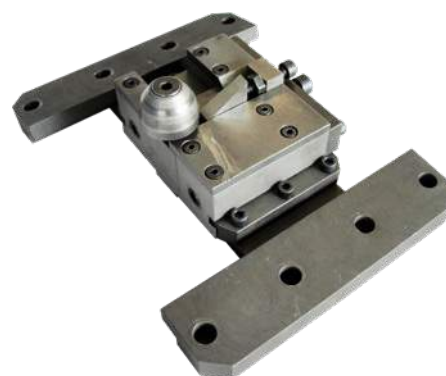
US150 Mounting device:

| Order No. | Description |
|------------|---------------------------------|
| US150-2500 | Bench mounting device for US150 |



US150 ID & OD Tracker:

| Order No. | Description |
|------------|---|
| US150-3400 | ID-Tracker (to keep a constant land when tube is oval; 5 mm at the radius. Can be used from 210 mm ID to 508 mm OD, limited tube wall thickness according to material and bevel type) |
| US150-3500 | OD-Tracker (to keep a constant land when tube is oval. Can be used from 324,6 mm ID to 489,6 mm OD, limited tube wall thickness according to material and bevel type) |



ID Mounted

US150 Spider Assembly:

| Order No. | Description |
|----------------|---|
| US150PR/C-1001 | Spider assembly ranging from 20" to 30" (to be used with copying / flange facing carriages US150-3100 and US150-3000) |
| US150PR/C-1002 | Spider assembly ranging from 20" to 35.433" (to be used with copying / flange facing carriages US150-3200 and US150-3000) |

