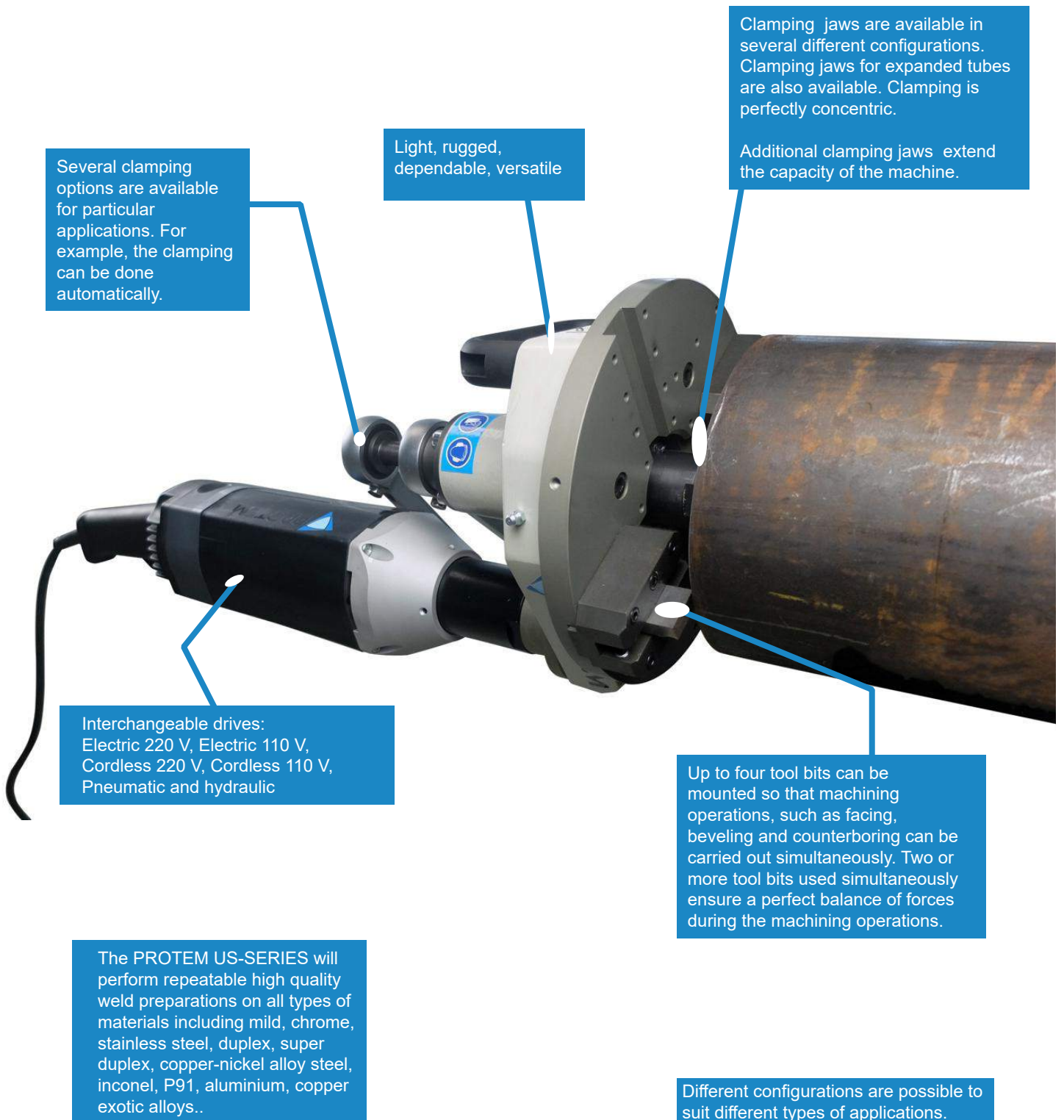


US40 Pipe Beveling Machine



US40 Pipe Beveling Machine

Standard Capacity: 43mm - 219mm (1.692" - 8.622")

Extended Capacity: 43mm - 273mm (1.629" - 10.748")



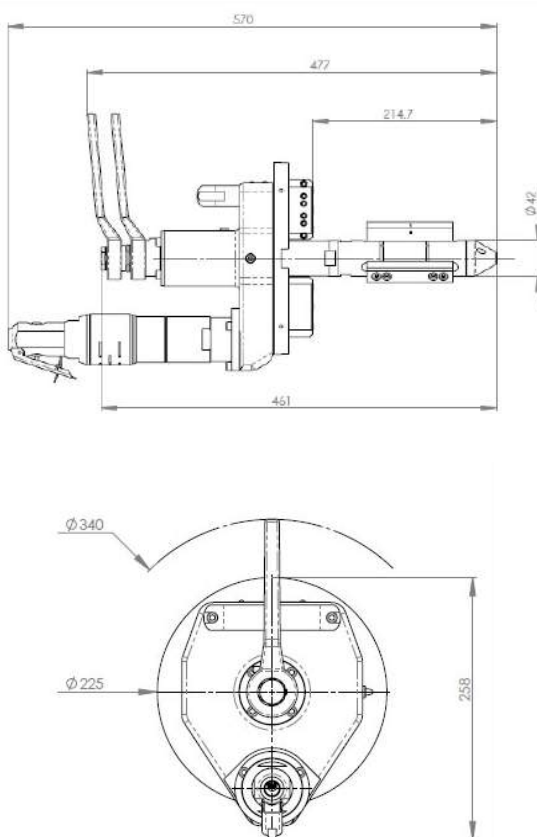
US40 with pneumatic drive

The portable id mount PROTEM US40 tube and pipe beveling machine is powerful, durable, reliable and versatile. The US40 covers Ø ranging from 43mm (1.692") to 219mm (8.622"). The standard tool plate will accept multiple tool bits, allowing up to four simultaneous machining operations which may include 30°, 37°30', 45° bevels with or without land, J-bevels, compound bevels, facing, counterboring operations, cutting tubes to length and removal of weld joints on boiler panels.

The tool bits can be changed and adjusted very quickly. Carbide tool inserts may also be used. The US40 features a self-accepting torque system and an integral drive motor. It can be either pneumatically or electrically or hydraulically driven. The PROTEM US40 will perform repeatable high quality weld preparations on all types of materials including mild steel, chrome, stainless steel, duplex, super duplex, copper-nickel alloy steel, inconel, P91, aluminium, copper and exotic alloys.

Beveling	Squaring	Counter-boring	Cut to length	Weld Joint Removal	Coating Removal	Saddles	Surfacing
✓	✓	✓	✓	✓	✓	✗	✓

ID Mounted



Dimensions

Advantages:

- Portable
- Powerful Machining Equipment
- Easy and Safe use for the Operators
- No Heat Affected Zone
- High Accuracy
- Fast and easy mounting
- The tool bits can be changed and adjusted very quickly
- Adapted for works in tight spaces
- The machine can be used in all positions: vertical, horizontal, over head
- Versatile Cutting Head: the tool-holder plate can accept up to 4 tool bits for simultaneous machining operations (land, bevel, counterboring, j prep)
- Smooth and Burr-Free Surface Finish
- No vibration during the machining process



US40 with electric drive

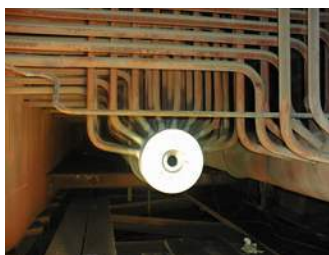
US40 Pipe Beveling Machine

Technical Features:

Specific shapes & angles	Facing 90°, bevel 30°, 37°30, 45°, counterbore, J-bevel, Other on request
Clamping	Manual with a key
Feed stroke	50 mm (1.968")
Expansion	15 mm (0.590")
Cutting head gear drive	25 rpm off-load speed 16 rpm nominal speed. Approximate rotation speed according to air pressure and air flow
Pneumatic drive	730 W, 6 bar (87 psi), 1400 l/min (49 cfm)
Electric drive	110 V (1500 W) or 220 V (1050 W)
Pneumatically driven machines have to be used with a lubricating filter. Recommended option: regulation valve.	

Order No.	Description
US40-1000	Pipe Facing Machine PROTEM US40 with pneumatic drive, for Ø 1.692" - 8.622" (43mm - 219mm)
US40-1020	Pipe Facing Machine PROTEM US40 with electric drive 220V, for Ø 1.692" - 8.622" (43mm - 219mm)
US40-1022	Pipe Facing Machine PROTEM US40 with electric drive 220V MS15. for Ø 1.692" - 8.622" (43mm - 219mm)
US40-1040	Pipe Facing Machine PROTEM US40 with electric drive 110V, for Ø 1.692" - 8.622" (43mm - 219mm)
US40-1060	Pipe Facing Machine PROTEM US40 with single hydraulic drive and regulation valve, for Ø 1.692" - 8.622" (43mm - 219mm)
US40-1062	Pipe Facing Machine PROTEM US40 with single hydraulic drive, for Ø 1.692" - 8.622" (43mm - 219mm)

Applications:



Use On-Site or in Workshop:

